



# **Analysis of greyhound racing injuries**

1 April 2021- 30 June 2021

# Foreword

The NSW Greyhound Welfare & Integrity Commission has published data since 2018 about injuries sustained by greyhounds while racing in NSW.

Reports are published:

- Quarterly, providing timely updates
- Annually, providing analysis of long-term trends

Together, these reports contribute to a growing body of evidence which can assist the industry in making evidence-based decisions with the aim of reducing the incidence and severity of greyhound racing injuries.

Standards for documenting greyhound racing injuries in reports produced by the Commission can be found at: [https://www.gwic.nsw.gov.au/news-and-updates/reports-and-statistics/injury-report/\\_nocache](https://www.gwic.nsw.gov.au/news-and-updates/reports-and-statistics/injury-report/_nocache)

Changes to report structure and content are sometimes made to enhance their utility. This quarterly report has a streamlined structure to make key data easier to find and improve the efficiency of report production.

## Key comments

- The Catastrophic injury rate this quarter has returned to the lowest levels observed, prior to the spike observed in Q1, at 0.6 per 1000 starts or 2% of all injuries reported.
- The total injury rate reported this quarter is slightly higher than last quarter at 30.1 per 1000 starts, and the majority of the increase was in the Minor (1-10 days) category.
- The majority of injuries (79%) recorded were Minor or Medium in nature, wounds and muscle injuries requiring less than 21 days stand down from racing. This is a higher proportion than observed in previous reports.
- The rate of Major II injuries reported this quarter has decreased to 8% of all injuries reported.
- The average number of starts per greyhound raced this quarter has increased from 5.2 to 5.4.

## Key data this quarter

### Injuries sustained at race meetings:

Table 1: Races and Injuries this quarter						
REPORTING PERIOD		1 April 2021- 30 June 2021			Q2 2021 / 2nd Quarter	
Race meetings		291				
Races		3,054				
Starts (times a greyhound has started a race)		22,293				
Individual greyhounds raced		4,104				
Average starts per greyhound		5.4				
Injury category	Incapacitation period (days)	Number of greyhounds injured	% injured per injury category	Cumulative total per injury category	Injuries per 100 greyhounds raced	Injuries per 1,000 starts
Minor*	1-10	321	48%	48%	7.8	14.4
Medium	14-21	207	31%	79%	5.0	9.3
Major I	28-42	85	13%	92%	2.1	3.8
Major II	43-90	43	6%	98%	1.0	1.9
Catastrophic	Euthanased/died	14	2%	100%	0.3	0.6
<b>Total</b>		670	100%	100%	16.3	30.1

### Euthanased not as part of race meeting

Note that this data depends on OTVs following up on a Major II injury suffered at the track and reports made by participants to the Commission by participants, and therefore may not be complete at the time of reporting. Due to this, and for comparability with previous years of data:

- Instances of euthanasia by a private veterinarian, away from the racetrack, after sustaining injury at a race meeting are counted as Major II injuries in the table above as the greyhound was not euthanased on track.
- Instances of euthanasia after sustaining injury in an official trial at a racetrack are not included in the table above but included in Table 2 below.
- More information on greyhounds medically euthanased away from the racetrack can be found in the Commission's quarterly 'Greyhound Retirement and End of Life Report', which is available on the Commission's [website](#).

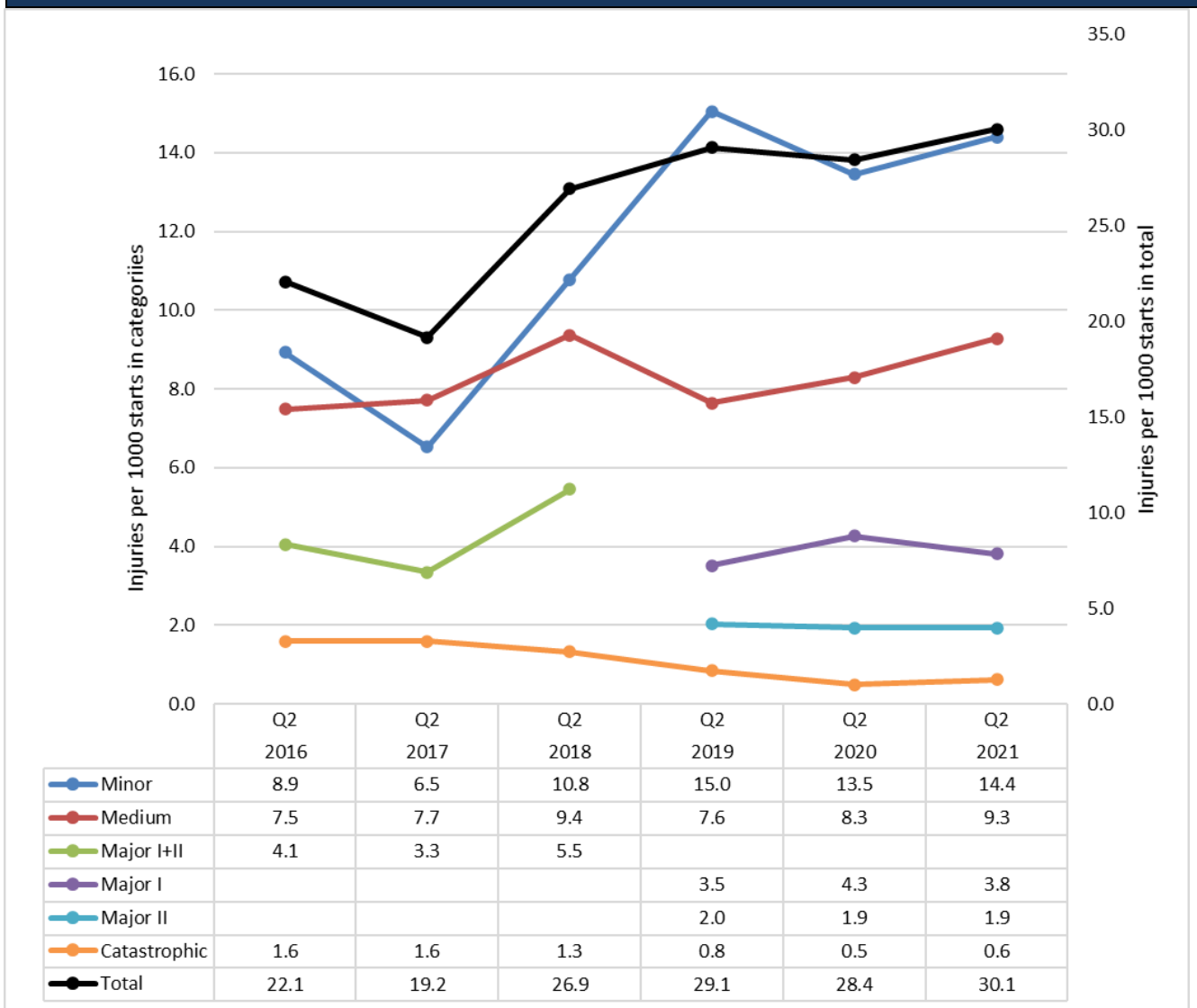
Table 2: Euthanasia not as part of a race meeting		
Reporting Period	1 April- 30 June 2021	Q2 2021 / 2nd Quarter
Reported euthanased by private veterinarian after sustaining injury at race meeting	6	
Reported euthanased after sustaining injury in unofficial trial at racetrack	1	
Euthanased/sudden death after sustaining injury in official trial at racetrack	0	

# Trends

## Controlled for seasonal variation

Injury rates are correlated with season, with hotter quarters 1 and 4 in each year usually having higher injury rates than cooler quarters 2 and 3. Comparing this quarter's data with the same quarter in previous years reduces the influence of season and provides a more accurate picture of long-term trends in injury rates.

**Figure 1: Injury trends for same quarter over 6 years**



\*Note: reporting prior to Q3 2018 was by GRNSW and is not directly comparable due to differences in data definitions and recording.

Table 3: This quarter compared to the same quarter in previous years	
Injury type	This quarter compared to same quarter in previous years
Minor	Increased (14.4 per 1000 starts) compared to Q2 2020 (13.5 per 1000 starts) and decreased since Q2 2019 (15.0 per 1000 starts).
Medium	Increased (9.3 per 1000 starts) compared to Q2 2020 (8.3 per 1000 starts) and Q2 2019 (7.6 per 1000 starts).
Major I	Decreased (3.8 per 1000 starts) compared to Q2 2020 (4.3 per 1000 starts) and increased slightly since Q2 2019 (3.5 per 1000 starts).
Major II	Consistent with Q2 2020 (1.9 per 1000 starts) and Q2 2019 (2.0 per 1000 starts).
Catastrophic	Consistent (0.6 per 1000 starts) with Q2 2020 (0.5 per 1000 starts) at the lowest level recorded, maintaining the trend towards low rates.
Total	Increased (30.1 per 1000 starts) since Q2 2020 (28.4 per 1000 starts) and Q2 2019 (29.1 per 1000 starts).

**Comment**

- 79% of all injuries reported were Minor or Medium in nature (requiring no more than 21 days stand down from racing) which is a higher proportion of fully recoverable injuries than seen previously (76%).
- The increase in total injuries was mainly due to the increase in Minor I injuries, requiring between 1-10 days stand down from racing.

All quarters

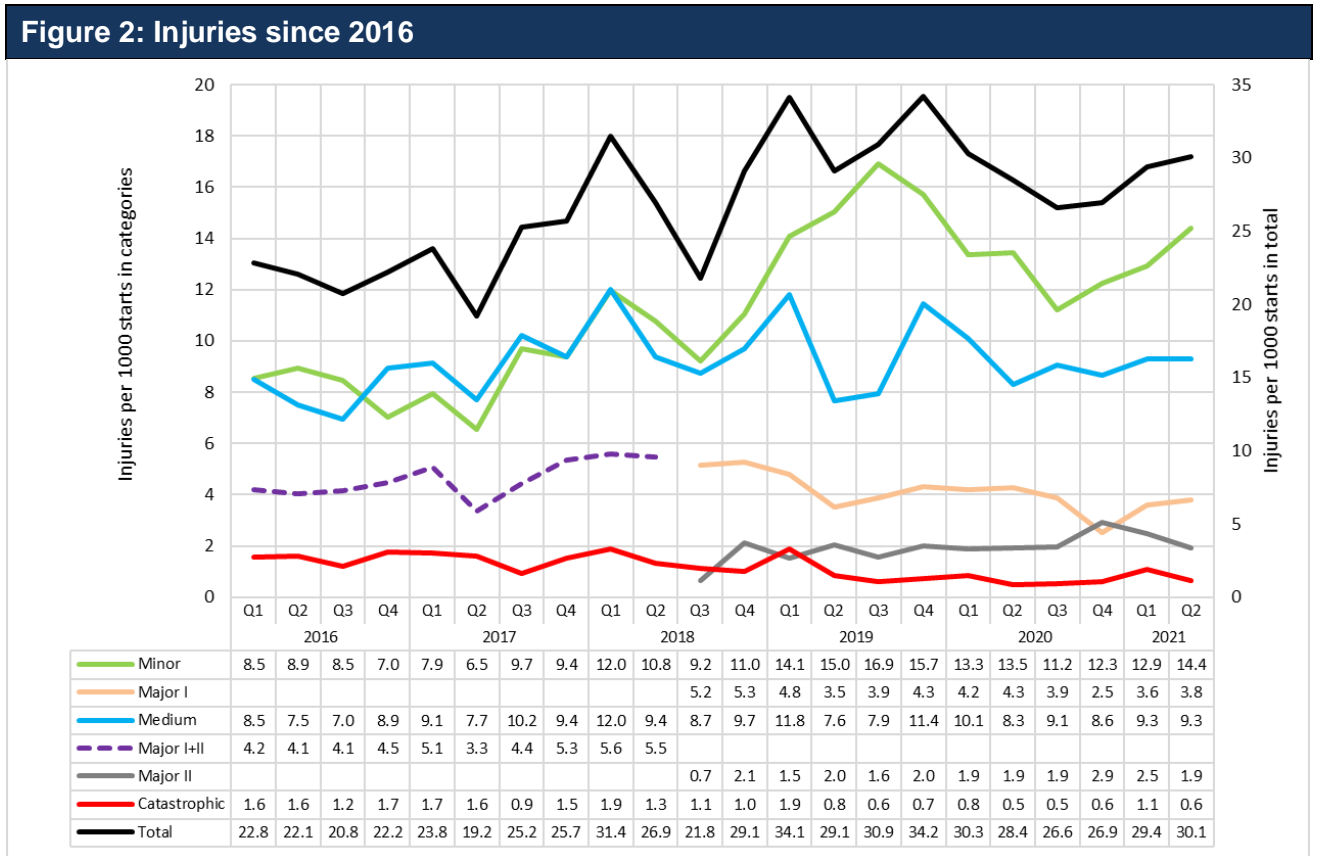


Table 4: This quarter compared to all previous records	
Injury type	This quarter compared to all previous records
Minor	Highest reported in the previous six quarters.
Medium	Consistent with previous quarters, which decreased since Q1 2020.
Major I	Consistent with other quarters aside from lowest reported in Q4 2020 (2.5 per 1000 starts).
Major II	Lower than previous two quarters and consistent with previous trends.
Catastrophic	Significantly lower than the spike observed last quarter and consistent with low trend reported since Q2 2019.
Total	Consistent with previously reported total rates, apart from a decrease in total rates observed in Q3 and Q4 of 2020 (26.6 and 26.9 per 1000 starts).
<b>Comment</b>	
<ul style="list-style-type: none"> <li>Injury rates this quarter are largely consistent with what has previously been reported.</li> </ul>	

## Race Injury Review Panel Analysis

There are many causes of injuries in racing greyhounds and the relative importance and interactions of causative factors vary. Causative factors can be divided into:

- Greyhound factors:** genetics, nutrition, physical growth and development, fitness, race preparation, racing form and previous injury history.
- Track factors:** design and surface characteristics; environmental influences.
- Race factors:** race distance, racing incidents (collisions) and number of greyhounds in a race.

Major II and Catastrophic injuries which occurred during this quarter were reviewed by the Race Injury Review Panel, continuing work begun in February 2019. The Panel assesses factors that may have contributed to each injury and where possible attributes it to greyhound, track or race factors. Over time, the data collected will assist in informing prevention strategies and regulatory steps aimed at minimising the incidence of racing injuries.

Table 5 summarises the results of Panel deliberations and data for this quarter. In some instances, more than one factor contributed to an injury, usually where track factors and racing incidents both contributed to an incident. Where insufficient evidence is available (such as in trials or races where no video footage is available) the possible contributions to the injury are not considered by the Panel, but those greyhounds may be included in counts of the gender, age, distance, location and race history of injured greyhounds.

**Table 5: Review of Major II and Catastrophic injuries this quarter**

	Catastrophic/ sudden death	Major II	Total
<b>Race Injury Review Panel assessment of contributing factors to injuries</b>			
Greyhound factors	2	5	7
Race factors	10	26	36
Track factors	0	1	1
More than one factor	0	0	0
Unable to attribute factors	2	5	7
<b>Total assessed</b>	14	37	51
<b>Gender of injured greyhound</b>			
Female	9	16	25
Male	5	21	26
<b>Age of injured greyhound to nearest six months</b>			
1.5 years	1	1	2
2 years	2	5	7
2.5 years	5	8	13
3 years	2	12	14
3.5 years	2	4	6
4 years	1	3	4
4.5 years	1	4	5
5 years	0	0	0
<b>Distance of race in which greyhound was injured in meters</b>			
Under 300	0	1	1
300-399	10	13	23
400-499	2	10	12
500-600	2	13	15
Over 600	0	0	0
<b>Location on track at which injury appears to have occurred</b>			
Soon after start	1	4	5
Straight	2	3	5
Turn	9	30	39
Catching pen	1		1
Unknown	1		1
<b>Racing history of injured greyhound</b>			
Average and range of starts in last 30 days	2.1	2.5	2.4
Average and range of starts in last 60 days	3.8	5.2	4.8
Average and range of career starts	24.4 (0 – 67)	39.1 (2 – 173)	35.1 (0 - 173)